

Unit F091: Exam module

Anatomy & physiology for health & social care-

Preparation tasks

- Understand the cardiovascular system, malfunctions and their impact on individuals
- Understand the respiratory system, malfunctions and their impact on individuals
- Understand the digestive system, malfunctions and their impact on individuals
- Understand the musculoskeletal systems, malfunctions and their impact on individuals
- Understand the control and regulatory systems, malfunctions and their impact on individuals
- Understand the sensory systems, malfunctions and their impact on individuals

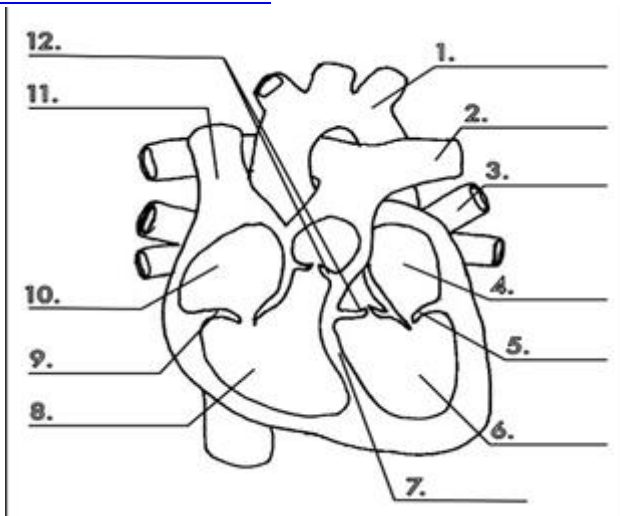
Name

tutor group:

The Cardiovascular System

TASK 1: Label the diagram below and describe the function (what each part does).

Watch this as an introduction: <https://www.youtube.com/watch?v=DB5HxSPGVp0&list=PL86hLI-Po3nXsZKBKGKPNwKNDI3GRBfR1&index=14>



Use <https://www.bhf.org.uk/informationsupport/how-a-healthy-heart-works> to help.

1.	7.
2.	8.
3.	9.
4.	10.
5.	11.
6.	12.

TASK 2: Log on to Seneca and join this class.....

<https://app.senecalearning.com/dashboard/join-class/fzpz8nhykd>

Complete the assignments set.

TASK 3: Complete the tasks on this link.

<https://www.abpischools.org.uk/topic/heartandcirculation/>

Seneca Score	
ABPI Score	

Name

tutor group:

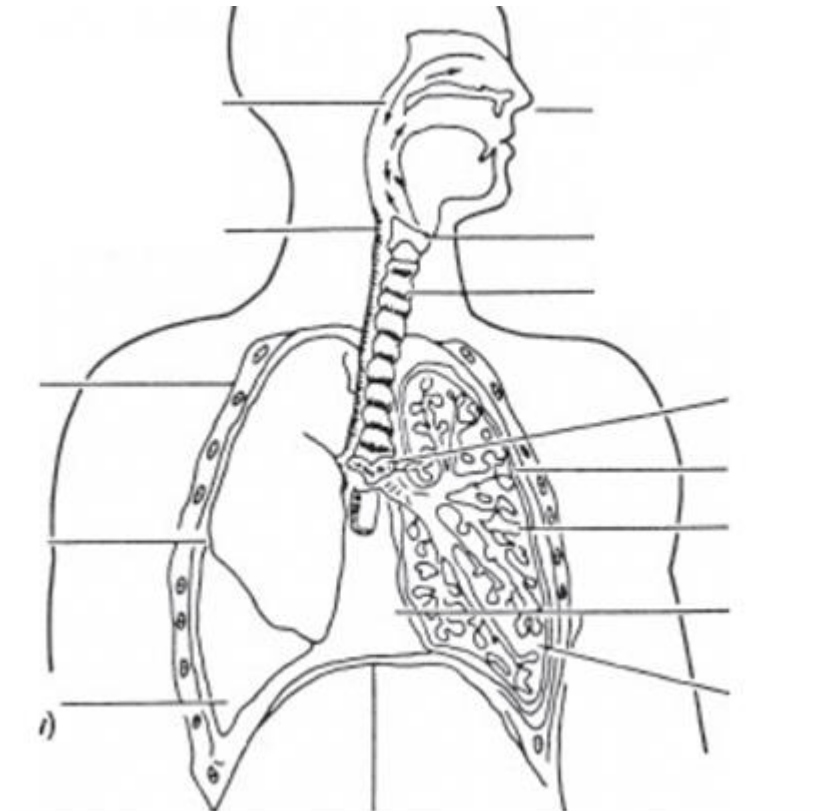
The respiratory system



Our respiratory system takes in air containing oxygen, which is needed by the cells and the body tissues, and enables poisonous carbon dioxide to be removed from the body.

Watch this as an introduction: <https://www.youtube.com/watch?v=3p6Rlv9ZRY4>

TASK 1: Label the diagram below:



TASK 2: Complete the tasks on

<https://www.abpischools.org.uk/topic/breathingandasthma/1/1>

ABPI Score	

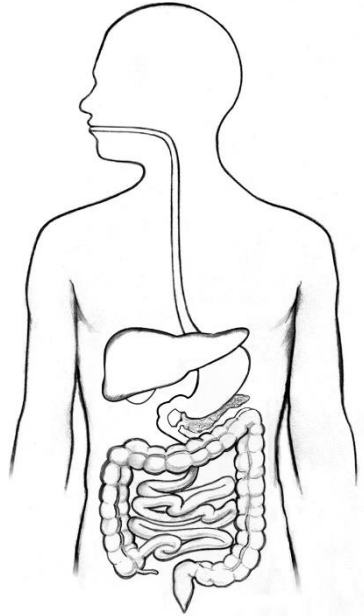
Name

tutor group:

The Digestive System

Watch this as an introduction: <https://www.youtube.com/watch?v=eq--NTMFptQ>

TASK 1: Label the diagram below



TASK 2: Complete the tasks <https://www.abpischools.org.uk/topic/dietanddigestion/1/1>

ABPI Score	

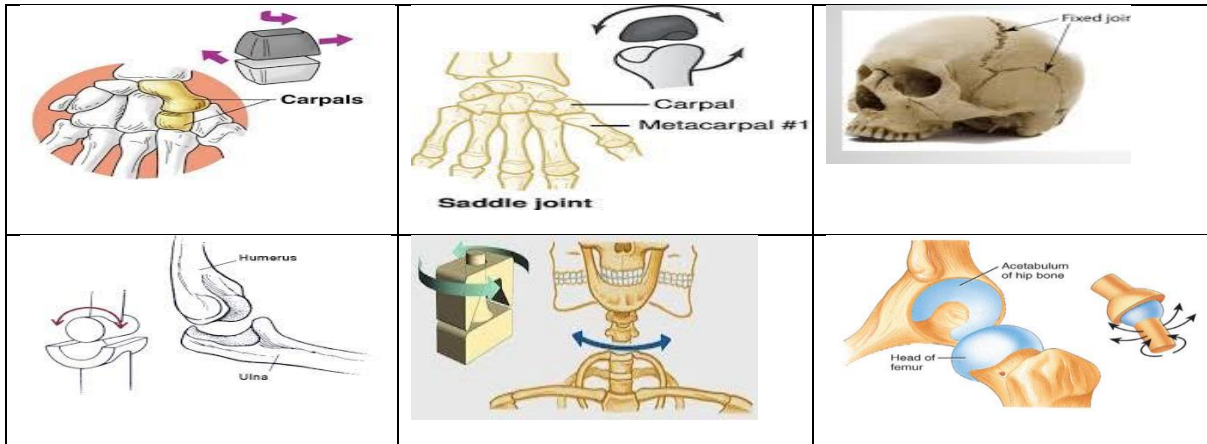
Name

tutor group:

The Musculo-skeletal System

Watch this as an introduction: <https://www.youtube.com/watch?v=FRsuzrYSXII>

TASK 1: Identify the type of joint and give an example location.



TASK 2: Complete Seneca assignment Musculo-skeletal system

Seneca Score	
ABPI Score	

Name

tutor group:

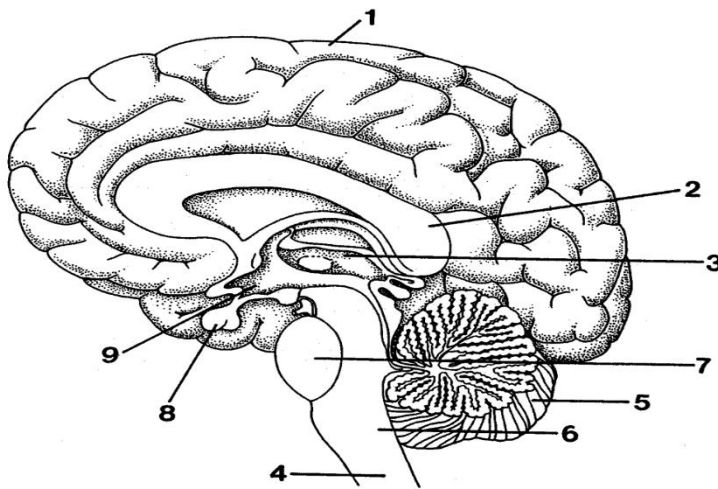
The nervous & control systems

Watch these clips as an introduction:

<https://www.youtube.com/watch?v=L2fYuZW4tg4&list=PL86hLI-Po3nXsZKBKGKPNwKNDI3GRBfR1&index=7>

<https://www.youtube.com/watch?v=Bn8czDqPUvY&list=PL86hLI-Po3nXsZKBKGKPNwKNDI3GRBfR1&index=7&t=0s>

TASK 1: Label the diagram below



TASK 2: Complete the tasks (nervous system)

<https://www.abpischools.org.uk/topic/nervoussystem/1/1>

TASK 3: Complete the tasks (endocrine system)

<https://www.abpischools.org.uk/topic/hormones/1/1>

TASK 4: Complete the tasks (homeostasis & kidney)

<https://www.abpischools.org.uk/topic/homeostasis-kidneys/1/1>

Scores	
Nervous system	
Endocrine system	
Homeostasis	

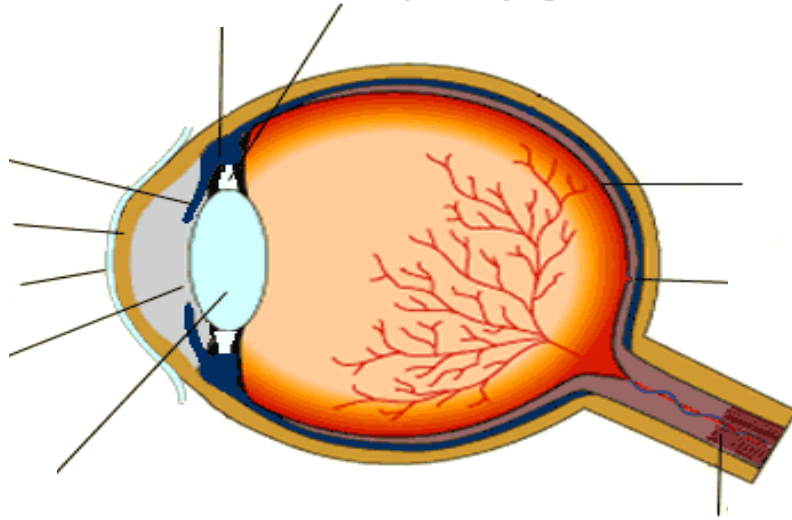
Name

tutor group:

The Sensory System

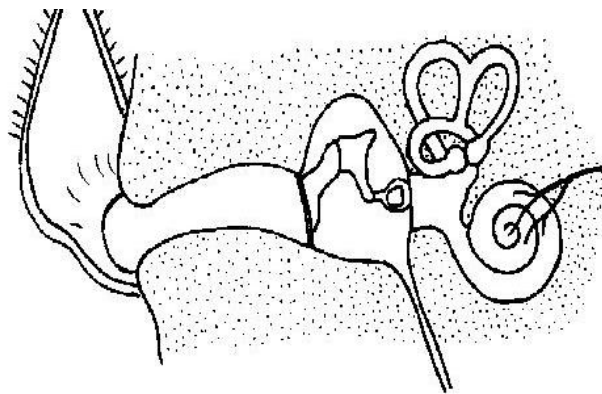
TASK 1: Label the diagram below

Watch this as an introduction: <https://www.youtube.com/watch?v=OUayfxyplrg>



TASK 2: Label the diagram of the ear below

Watch this as an introduction: <https://www.youtube.com/watch?v=FWOIF0ObldU>



TASK 3: Complete the tasks on

<https://www.abpishools.org.uk/topic/nervoussystem/7/0>

Scores	
Eye	